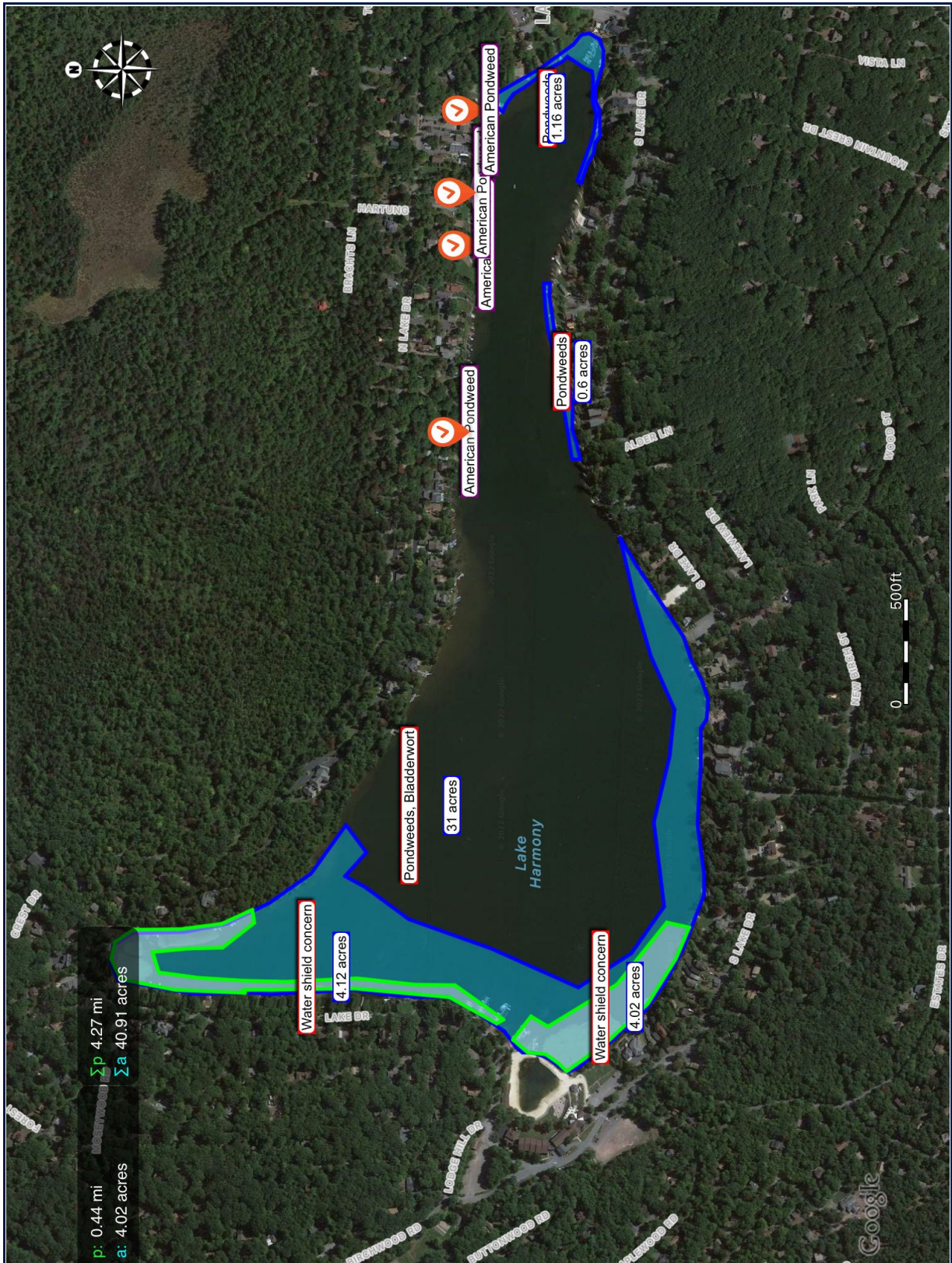


Harmony 6.21.2022

Generated by Measure Map Pro on Jun 22, 2022 at 7:17:25 AM

PerimetroKey: 4.27 mi

Area: 40.91 acres



Map points:: Harmony 6.21.2022

Polygon: Pondweeds, Bladderwort

Area: 31 acres

Point	Latitude	Longitude	Distance to next	Azimuth	Angle	Altitude
n. 0	N 41° 3.79309'	W 75° 36.36857'	287.2 ft	---	---	1,856 ft
n. 1	N 41° 3.82055'	W 75° 36.41945'	243.2 ft	305.5°	199.3°	1,856 ft
n. 2	N 41° 3.85326'	W 75° 36.44998'	227.2 ft	324.8°	188.9°	1,856 ft
n. 3	N 41° 3.88677'	W 75° 36.47194'	209.7 ft	333.6°	195.6°	1,857 ft
n. 4	N 41° 3.92069'	W 75° 36.48051'	242.8 ft	349.2°	189.7°	1,857 ft
n. 5	N 41° 3.96067'	W 75° 36.48158'	111.6 ft	358.8°	149.0°	1,858 ft
n. 6	N 41° 3.97622'	W 75° 36.49451'	83.6 ft	327.8°	129.4°	1,857 ft
n. 7	N 41° 3.97795'	W 75° 36.51256'	90.7 ft	277.2°	151.4°	1,858 ft
n. 8	N 41° 3.97250'	W 75° 36.53094'	133.2 ft	248.6°	122.5°	1,856 ft
n. 9	N 41° 3.95098'	W 75° 36.53652'	236.2 ft	191.1°	178.5°	1,856 ft
n. 10	N 41° 3.91262'	W 75° 36.54505'	257.0 ft	189.6°	169.1°	1,856 ft
n. 11	N 41° 3.87030'	W 75° 36.54374'	111.5 ft	178.7°	185.2°	1,856 ft
n. 12	N 41° 3.85199'	W 75° 36.54538'	179.1 ft	183.9°	173.2°	1,856 ft
n. 13	N 41° 3.82254'	W 75° 36.54341'	224.2 ft	177.1°	179.8°	1,856 ft
n. 14	N 41° 3.78567'	W 75° 36.54079'	150.5 ft	176.9°	191.7°	1,856 ft
n. 15	N 41° 3.76117'	W 75° 36.54571'	159.8 ft	188.6°	175.7°	1,856 ft
n. 16	N 41° 3.73493'	W 75° 36.54834'	129.3 ft	184.3°	175.0°	1,856 ft
n. 17	N 41° 3.71365'	W 75° 36.54801'	138.6 ft	179.3°	207.9°	1,856 ft

n. 18	N 41° 3.69336'	W 75° 36.56179'	181.1 ft	207.2°	186.7°	1,856 ft
n. 19	N 41° 3.66861'	W 75° 36.58378'	97.9 ft	213.9°	199.3°	1,856 ft
n. 20	N 41° 3.65896'	W 75° 36.60085'	40.7 ft	233.2°	165.9°	1,856 ft
n. 21	N 41° 3.65376'	W 75° 36.60643'	48.1 ft	219.1°	140.9°	1,856 ft
n. 22	N 41° 3.64584'	W 75° 36.60643'	73.2 ft	180.0°	199.2°	1,856 ft
n. 23	N 41° 3.63446'	W 75° 36.61168'	78.9 ft	199.2°	195.8°	1,856 ft
n. 24	N 41° 3.62381'	W 75° 36.62153'	39.7 ft	215.0°	182.4°	1,856 ft
n. 25	N 41° 3.61862'	W 75° 36.62678'	61.2 ft	217.4°	117.8°	1,856 ft
n. 26	N 41° 3.60946'	W 75° 36.62120'	117.6 ft	155.2°	164.8°	1,856 ft
n. 27	N 41° 3.59461'	W 75° 36.60479'	105.1 ft	140.1°	181.8°	1,856 ft
n. 28	N 41° 3.58100'	W 75° 36.59068'	111.9 ft	141.9°	171.4°	1,856 ft
n. 29	N 41° 3.56838'	W 75° 36.57295'	84.2 ft	133.3°	189.9°	1,856 ft
n. 30	N 41° 3.55727'	W 75° 36.56197'	156.4 ft	143.2°	162.3°	1,856 ft
n. 31	N 41° 3.54234'	W 75° 36.53424'	191.8 ft	125.4°	172.8°	1,856 ft
n. 32	N 41° 3.52741'	W 75° 36.49746'	141.0 ft	118.2°	171.7°	1,856 ft
n. 33	N 41° 3.51951'	W 75° 36.46860'	133.5 ft	109.9°	182.4°	1,856 ft
n. 34	N 41° 3.51119'	W 75° 36.44172'	101.4 ft	112.2°	157.8°	1,856 ft
n. 35	N 41° 3.51119'	W 75° 36.41966'	145.8 ft	90.0°	171.8°	1,856 ft
n. 36	N 41° 3.51461'	W 75° 36.38825'	92.9 ft	81.8°	181.8°	1,856 ft
n. 37	N 41° 3.51631'	W 75° 36.36816'	130.1 ft	83.6°	188.7°	1,856 ft
n. 38	N 41° 3.51546'	W 75° 36.33987'	160.3 ft	92.3°	181.4°	1,856 ft

n. 39	N 41° 3.51375'	W 75° 36.30507'	87.1 ft	93.7°	177.1°	1,856 ft
n. 40	N 41° 3.51354'	W 75° 36.28611'	84.5 ft	90.9°	178.3°	1,856 ft
n. 41	N 41° 3.51375'	W 75° 36.26772'	52.6 ft	89.1°	213.7°	1,856 ft
n. 42	N 41° 3.50906'	W 75° 36.25810'	96.4 ft	122.8°	151.0°	1,856 ft
n. 43	N 41° 3.50799'	W 75° 36.23717'	94.5 ft	93.9°	157.8°	1,856 ft
n. 44	N 41° 3.51290'	W 75° 36.21764'	111.0 ft	71.6°	171.3°	1,856 ft
n. 45	N 41° 3.52122'	W 75° 36.19614'	118.0 ft	62.9°	188.5°	1,856 ft
n. 46	N 41° 3.52741'	W 75° 36.17181'	98.0 ft	71.4°	166.7°	1,856 ft
n. 47	N 41° 3.53594'	W 75° 36.15370'	121.4 ft	58.1°	177.5°	1,856 ft
n. 48	N 41° 3.54725'	W 75° 36.13192'	184.8 ft	55.6°	181.3°	1,858 ft
n. 49	N 41° 3.56389'	W 75° 36.09825'	159.1 ft	56.9°	182.3°	1,856 ft
n. 50	N 41° 3.57733'	W 75° 36.06854'	312.2 ft	59.1°	17.6°	1,856 ft
n. 51	N 41° 3.56555'	W 75° 36.13466'	273.7 ft	256.8°	177.2°	1,856 ft
n. 52	N 41° 3.55308'	W 75° 36.19189'	281.1 ft	253.9°	172.2°	1,856 ft
n. 53	N 41° 3.53438'	W 75° 36.24784'	226.2 ft	246.2°	209.7°	1,856 ft
n. 54	N 41° 3.53822'	W 75° 36.29680'	324.6 ft	275.9°	187.6°	1,856 ft
n. 55	N 41° 3.55069'	W 75° 36.36548'	409.2 ft	283.5°	159.6°	1,856 ft
n. 56	N 41° 3.54253'	W 75° 36.45386'	274.5 ft	263.1°	221.9°	1,856 ft
n. 57	N 41° 3.56842'	W 75° 36.50282'	301.6 ft	304.9°	202.2°	1,856 ft
n. 58	N 41° 3.61014'	W 75° 36.53843'	456.4 ft	327.1°	237.1°	1,856 ft
n. 59	N 41° 3.67870'	W 75° 36.49774'	417.3 ft	24.2°	175.4°	1,856 ft

n. 60	N 41° 3.74342'	W 75° 36.46721'	260.6 ft	19.6°	196.8°	1,856 ft
n. 61	N 41° 3.77794'	W 75° 36.43351'	109.5 ft	36.5°	172.2°	1,856 ft
n. 62	N 41° 3.79376'	W 75° 36.42207'	152.9 ft	28.7°	283.1°	1,856 ft
n. 63	N 41° 3.77698'	W 75° 36.39727'	164.2 ft	131.8°	101.7°	1,856 ft
n. 64	N 41° 3.79309'	W 75° 36.36857'	---	53.5°	---	1,856 ft

Polygon: Pondweeds

Area: **0.6 acres**

Point	Latitude	Longitude	Distance to next	Azimuth	Angle	Altitude
n. 0	N 41° 3.61138'	W 75° 35.97058'	73.7 ft	---	---	1,856 ft
n. 1	N 41° 3.61492'	W 75° 35.95523'	93.6 ft	73.0°	197.8°	1,856 ft
n. 2	N 41° 3.61468'	W 75° 35.93488'	110.3 ft	90.9°	171.7°	1,856 ft
n. 3	N 41° 3.61704'	W 75° 35.91108'	96.7 ft	82.5°	172.9°	1,856 ft
n. 4	N 41° 3.62106'	W 75° 35.89073'	89.0 ft	75.4°	171.8°	1,856 ft
n. 5	N 41° 3.62672'	W 75° 35.87288'	144.1 ft	67.2°	194.2°	1,856 ft
n. 6	N 41° 3.63026'	W 75° 35.84188'	119.1 ft	81.4°	181.0°	1,856 ft
n. 7	N 41° 3.63286'	W 75° 35.81620'	63.4 ft	82.4°	190.2°	1,856 ft
n. 8	N 41° 3.63239'	W 75° 35.80243'	30.1 ft	92.6°	87.4°	1,856 ft
n. 9	N 41° 3.63735'	W 75° 35.80243'	121.1 ft	0.0°	86.6°	1,856 ft
n. 10	N 41° 3.63617'	W 75° 35.82873'	0.0 ft	266.6°	93.4°	1,856 ft
n. 11	N 41° 3.63617'	W 75° 35.82873'	0.0 ft	180.0°	360.0°	1,856 ft
n. 12	N 41° 3.63617'	W 75° 35.82873'	113.2 ft	180.0°	82.7°	1,856 ft
n. 13	N 41° 3.63381'	W 75° 35.85315'	148.7 ft	262.7°	172.8°	1,856 ft

n. 14	N 41° 3.62767'	W 75° 35.88447'	117.1 ft	255.5°	183.9°	1,856 ft
n. 15	N 41° 3.62413'	W 75° 35.90952'	138.6 ft	259.4°	181.1°	1,856 ft
n. 16	N 41° 3.62035'	W 75° 35.93926'	113.2 ft	260.5°	182.2°	1,856 ft
n. 17	N 41° 3.61799'	W 75° 35.96369'	106.7 ft	262.7°	177.2°	1,856 ft
n. 18	N 41° 3.61492'	W 75° 35.98655'	38.7 ft	259.9°	97.9°	1,856 ft
n. 19	N 41° 3.60854'	W 75° 35.98623'	74.0 ft	177.9°	78.7°	1,856 ft
n. 20	N 41° 3.61138'	W 75° 35.97058'	---	76.6°	---	1,856 ft

Polygon: Pondweeds

Area: 1.16 acres

Point	Latitude	Longitude	Distance to next	Azimuth	Angle	Altitude
n. 0	N 41° 3.60808'	W 75° 35.69794'	54.8 ft	---	---	1,856 ft
n. 1	N 41° 3.60553'	W 75° 35.68650'	45.8 ft	106.4°	185.7°	1,856 ft
n. 2	N 41° 3.60269'	W 75° 35.67728'	57.7 ft	112.1°	187.5°	1,856 ft
n. 3	N 41° 3.59799'	W 75° 35.66636'	50.0 ft	119.7°	157.9°	1,856 ft
n. 4	N 41° 3.59691'	W 75° 35.65558'	38.3 ft	97.5°	209.8°	1,856 ft
n. 5	N 41° 3.59309'	W 75° 35.64895'	72.3 ft	127.3°	140.3°	1,856 ft
n. 6	N 41° 3.59358'	W 75° 35.63323'	54.3 ft	87.6°	183.0°	1,856 ft
n. 7	N 41° 3.59348'	W 75° 35.62141'	56.5 ft	90.6°	157.8°	1,856 ft
n. 8	N 41° 3.59691'	W 75° 35.60997'	46.0 ft	68.4°	202.4°	1,856 ft
n. 9	N 41° 3.59681'	W 75° 35.59997'	63.6 ft	90.7°	197.8°	1,856 ft
n. 10	N 41° 3.59348'	W 75° 35.58684'	60.8 ft	108.5°	177.3°	1,857 ft
n. 11	N 41° 3.59074'	W 75° 35.57411'	68.7 ft	105.9°	166.1°	1,858 ft

n. 12	N 41° 3.59035'	W 75° 35.55917'	56.3 ft	92.0°	158.9°	1,856 ft
n. 13	N 41° 3.59338'	W 75° 35.54761'	58.4 ft	70.9°	139.2°	1,857 ft
n. 14	N 41° 3.60171'	W 75° 35.54124'	38.3 ft	30.1°	138.2°	1,856 ft
n. 15	N 41° 3.60788'	W 75° 35.54293'	59.8 ft	348.3°	140.5°	1,856 ft
n. 16	N 41° 3.61406'	W 75° 35.55306'	193.3 ft	308.8°	195.2°	1,856 ft
n. 17	N 41° 3.63982'	W 75° 35.57775'	106.3 ft	324.1°	184.8°	1,856 ft
n. 18	N 41° 3.65481'	W 75° 35.58970'	82.4 ft	328.9°	181.1°	1,856 ft
n. 19	N 41° 3.66657'	W 75° 35.59867'	74.1 ft	330.0°	181.1°	1,856 ft
n. 20	N 41° 3.67725'	W 75° 35.60646'	37.0 ft	331.1°	119.8°	1,856 ft
n. 21	N 41° 3.67735'	W 75° 35.61452'	62.1 ft	270.9°	129.9°	1,856 ft
n. 22	N 41° 3.66961'	W 75° 35.62336'	45.9 ft	220.8°	73.7°	1,856 ft
n. 23	N 41° 3.66647'	W 75° 35.61426'	55.1 ft	114.5°	191.2°	1,856 ft
n. 24	N 41° 3.66118'	W 75° 35.60452'	62.0 ft	125.7°	203.0°	1,856 ft
n. 25	N 41° 3.65246'	W 75° 35.59750'	78.3 ft	148.7°	174.3°	1,856 ft
n. 26	N 41° 3.64217'	W 75° 35.58723'	75.4 ft	142.9°	180.6°	1,856 ft
n. 27	N 41° 3.63218'	W 75° 35.57749'	69.0 ft	143.6°	188.0°	1,856 ft
n. 28	N 41° 3.62219'	W 75° 35.57034'	29.9 ft	151.6°	162.5°	1,856 ft
n. 29	N 41° 3.61876'	W 75° 35.56567'	101.4 ft	134.1°	259.5°	1,856 ft
n. 30	N 41° 3.60485'	W 75° 35.57788'	35.3 ft	213.6°	168.3°	1,856 ft
n. 31	N 41° 3.59946'	W 75° 35.58074'	34.6 ft	201.9°	238.2°	1,856 ft
n. 32	N 41° 3.59848'	W 75° 35.58814'	57.3 ft	260.1°	190.5°	1,856 ft

n. 33	N 41° 3.59858'	W 75° 35.60062'	48.5 ft	270.6°	182.9°	1,856 ft
n. 34	N 41° 3.59907'	W 75° 35.61114'	70.5 ft	273.5°	161.3°	1,856 ft
n. 35	N 41° 3.59603'	W 75° 35.62595'	63.6 ft	254.8°	201.1°	1,856 ft
n. 36	N 41° 3.59711'	W 75° 35.63973'	47.7 ft	275.9°	186.3°	1,856 ft
n. 37	N 41° 3.59877'	W 75° 35.64986'	134.6 ft	282.2°	186.0°	1,856 ft
n. 38	N 41° 3.60573'	W 75° 35.67767'	86.0 ft	288.3°	183.2°	1,856 ft
n. 39	N 41° 3.61092'	W 75° 35.69508'	21.7 ft	291.5°	105.8°	1,856 ft
n. 40	N 41° 3.60808'	W 75° 35.69794'	---	217.3°	---	1,856 ft

Polygon: Water shield concern

Area: 4.12 acres

Point	Latitude	Longitude	Distance to next	Azimuth	Angle	Altitude
n. 0	N 41° 3.87252'	W 75° 36.54403'	330.7 ft	---	---	1,856 ft
n. 1	N 41° 3.92693'	W 75° 36.54098'	267.9 ft	2.4°	171.4°	1,856 ft
n. 2	N 41° 3.97023'	W 75° 36.52980'	108.6 ft	11.1°	126.4°	1,856 ft
n. 3	N 41° 3.97790'	W 75° 36.50846'	83.9 ft	64.6°	141.8°	1,857 ft
n. 4	N 41° 3.97483'	W 75° 36.49067'	106.0 ft	102.8°	136.3°	1,858 ft
n. 5	N 41° 3.96027'	W 75° 36.47796'	223.4 ft	146.6°	147.2°	1,858 ft
n. 6	N 41° 3.92348'	W 75° 36.47745'	199.5 ft	179.4°	186.8°	1,859 ft
n. 7	N 41° 3.89091'	W 75° 36.47186'	161.5 ft	172.6°	197.4°	1,858 ft
n. 8	N 41° 3.86677'	W 75° 36.45712'	63.8 ft	155.2°	73.6°	1,856 ft
n. 9	N 41° 3.86524'	W 75° 36.47085'	192.5 ft	261.6°	119.8°	1,856 ft
n. 10	N 41° 3.89014'	W 75° 36.49677'	169.9 ft	321.8°	143.4°	1,856 ft

n. 11	N 41° 3.91812'	W 75° 36.49778'	166.0 ft	358.4°	184.1°	1,856 ft
n. 12	N 41° 3.94533'	W 75° 36.50134'	102.7 ft	354.3°	281.5°	1,856 ft
n. 13	N 41° 3.94034'	W 75° 36.52269'	192.5 ft	252.9°	245.2°	1,856 ft
n. 14	N 41° 3.90892'	W 75° 36.52828'	221.5 ft	187.7°	184.0°	1,856 ft
n. 15	N 41° 3.87252'	W 75° 36.53133'	195.5 ft	183.6°	182.3°	1,856 ft
n. 16	N 41° 3.84033'	W 75° 36.53234'	340.1 ft	181.4°	184.1°	1,856 ft
n. 17	N 41° 3.78438'	W 75° 36.52879'	278.6 ft	177.2°	171.0°	1,856 ft
n. 18	N 41° 3.73878'	W 75° 36.53539'	190.8 ft	186.3°	185.6°	1,856 ft
n. 19	N 41° 3.70735'	W 75° 36.53590'	285.8 ft	180.7°	145.2°	1,856 ft
n. 20	N 41° 3.66903'	W 75° 36.57199'	37.6 ft	215.5°	65.3°	1,856 ft
n. 21	N 41° 3.67439'	W 75° 36.57605'	258.6 ft	330.2°	121.0°	1,856 ft
n. 22	N 41° 3.71157'	W 75° 36.54861'	455.7 ft	29.2°	203.9°	1,856 ft
n. 23	N 41° 3.78629'	W 75° 36.53946'	532.9 ft	5.3°	186.0°	1,856 ft
n. 24	N 41° 3.87405'	W 75° 36.54098'	16.8 ft	359.2°	302.8°	1,856 ft
n. 25	N 41° 3.87252'	W 75° 36.54403'	---	236.4°	---	1,856 ft




Polygon: Water shield concern

Area: 4.02 acres

Point	Latitude	Longitude	Distance to next	Azimuth	Angle	Altitude
n. 0	N 41° 3.66158'	W 75° 36.59297'	92.5 ft	---	---	1,856 ft
n. 1	N 41° 3.65008'	W 75° 36.60618'	86.6 ft	221.0°	145.2°	1,856 ft
n. 2	N 41° 3.63591'	W 75° 36.60821'	73.7 ft	186.2°	208.6°	1,856 ft
n. 3	N 41° 3.62594'	W 75° 36.61736'	56.1 ft	214.8°	190.3°	1,856 ft

n. 4	N 41° 3.61943'	W 75° 36.62600'	228.9 ft	225.1°	99.3°	1,856 ft
n. 5	N 41° 3.58877'	W 75° 36.59703'	199.5 ft	144.4°	171.9°	1,856 ft
n. 6	N 41° 3.56501'	W 75° 36.56705'	79.2 ft	136.3°	181.0°	1,856 ft
n. 7	N 41° 3.55543'	W 75° 36.55536'	255.8 ft	137.3°	164.6°	1,856 ft
n. 8	N 41° 3.53320'	W 75° 36.50809'	162.2 ft	121.9°	170.9°	1,856 ft
n. 9	N 41° 3.52285'	W 75° 36.47556'	109.6 ft	112.8°	79.5°	1,856 ft
n. 10	N 41° 3.54048'	W 75° 36.47048'	380.0 ft	12.3°	116.4°	1,856 ft
n. 11	N 41° 3.57957'	W 75° 36.53503'	388.0 ft	308.7°	199.7°	1,856 ft
n. 12	N 41° 3.63399'	W 75° 36.57924'	95.1 ft	328.4°	242.7°	1,856 ft
n. 13	N 41° 3.64740'	W 75° 36.56857'	141.4 ft	31.1°	96.5°	1,856 ft
n. 14	N 41° 3.66158'	W 75° 36.59297'	---	307.5°	---	1,856 ft

Spots:

Icon	Spot	Latitude	Longitude	Altitude
	American Pondweed	N 41° 3.68621'	W 75° 35.62083'	1,856 ft
	American Pondweed	N 41° 3.69217'	W 75° 35.70692'	1,856 ft
	American Pondweed	N 41° 3.68902'	W 75° 35.76227'	1,856 ft
	American Pondweed	N 41° 3.69706'	W 75° 35.95716'	1,856 ft